

**KEY**

- Site Boundary
- Existing Vegetation (W1a)
- Proposed Barrier Fencing
- Proposed Soil Nailing (SNW)
- Proposed Woodland Mix (W2b)
- Proposed Woodland Edge Mix (W2b)
- Proposed Rabbit Proof Fencing & Access Stile
- Proposed Hedgerow (W3a)
- Proposed Amenity Grassland (G2a)
- Proposed Species-Rich Neutral Grassland Priority Habitat (G2a)
- Proposed Sedum Roof Habitat (R)
- Proposed Vehicle Deterrent Paving
- Extent of A1 Planting Plan Sheets

- HMP SUB-ZONES**
- W1a** Retained woodland within red line boundary;
  - W1b** Retained developing woodland outside the red line boundary;
  - W2a** Translocated woodland/hedge with newly planted woodland (half of total area);
  - W2b** Newly planted woodland;
  - W3a** Newly planted hedgerows (including those in the car park);
  - W3b** Retained hedgerow (gapped up);
  - G1** Retained grassland to east and south of Woodhouse Farm;
  - G2a** Newly sown grassland though not differentiating between amenity grass and species rich neutral grassland;
  - G2b** Natural regeneration grassland (Existing Open Habitat for GCN), outside the red line boundary;
  - G01** Newly created open mosaic grassland (two patches adjacent to northern boundary);
  - P1** An existing woodland pond to the south east of the Site, outside the red line boundary;
  - P2a** Newly created ditch with standing water to perimeter of G2b (Open Habitat for GCN habitat);
  - P2b** Newly created Upper Lagoon;
  - R** Green roof (part of Zone BR); and
  - SNW** Brownfield wall habitat (soil nail walling, part of Zone BR)

**PROPOSED PLANTING**

**NATIVE WOODLAND MIX - To be carried out within planting season, between October and March at locations indicated on plan. All trees to be planting in tree pits (300mm x 300mm x 300mm). Total Area 14,925 m<sup>2</sup> NT**

No.	Species	Common Name	Specification	Height	Pot Size	Density (m centres)
336 No.	<i>Acer campestre</i>	Field Maple	1+1: Transplant - seed raised: B	60-80cm	1.5Cr	1.5Cr
667 No.	<i>Betula pendula</i>	Silver Birch	1+1: Transplant - seed raised: B	40-60cm	1.5Cr	1.5Cr
336 No.	<i>Corylus avellana</i>	Hazel	1+1: Transplant - seed raised: Branched: 2 brks: B	40-60cm	1.5Cr	1.5Cr
667 No.	<i>Malus sylvestris</i>	Crab Apple	1+1: Transplant - seed raised: B	60-80cm	1.5Cr	1.5Cr
1661 No.	<i>Prunus avium</i>	Wild Cherry	Standard: 4 brks: 2x: B: Clear Stem 175-200cm. Girth 10-12cm	300-350cm	1.5Cr	1.5Cr
1983 No.	<i>Quercus robur</i>	Pendunculate Oak	1+1: Transplant - seed raised: B	40-60cm	1.5Cr	1.5Cr
1661 No.	<i>Tilia cordata</i>	Small-leaved Lime	1+1: Transplant - seed raised: B	60-80cm	1.5Cr	1.5Cr
Total: 6659 No.						

**NATIVE WOODLAND EDGE MIX - To be carried out within planting season, between October and March at locations indicated on plan. All trees to be planting in tree pits (300mm x 300mm x 300mm). Total Area 12,250 m<sup>2</sup> NT:**

No.	Species	Common Name	Specification	Height	Pot Size	Density (m centres)
1141 No.	<i>Acer campestre</i>	Field Maple	1+1: Transplant - seed raised: B	60-80cm	1Cr	1Cr
574 No.	<i>Cornus sanguinea</i>	Dogwood	1+1: Transplant - seed raised: Branched: 2 brks: B	40-60cm	1Cr	1Cr
2277 No.	<i>Corylus avellana</i>	Hazel	1+1: Transplant - seed raised: Branched: 2 brks: B	40-60cm	1Cr	1Cr
3579 No.	<i>Crataegus monogyna</i>	Hawthorn	1+1: Transplant - seed raised: B	40-60cm	1Cr	1Cr
1141 No.	<i>Ilex aquifolium</i>	Common Holly	Bushy: 2 brks: C	30-40cm	2L	1Cr
574 No.	<i>Malus sylvestris</i>	Common Crab Apple	1+1: Transplant - seed raised: B	60-80cm	1Cr	1Cr
1141 No.	<i>Prunus spinosa</i>	Blackthorn	1+1: Transplant - seed raised: Branched: 2 brks: B	60-80cm	1Cr	1Cr
574 No.	<i>Viburnum opulus</i>	Guelder Rose	1+1: Transplant - seed raised: B	40-60cm	1Cr	1Cr
Total: 11401 No.						

**TRANSLOCATED WOODLAND MIX - To be carried out within planting season, between October and March at locations indicated on plan. All trees to be planting in tree pits (300mm x 300mm x 300mm). Total Area 9,750 m<sup>2</sup> NT: Area consists of 50% proposed planting + 50 translocated planting @ 1.5m Centres**

No.	Species	Common Name	Specification	Height	Pot Size	Density (m centres)
59 No.	<i>Acer campestre</i>	Field Maple	1+1: Transplant - seed raised: B	60-80cm	3Cr	3Cr
108 No.	<i>Betula pendula</i>	Common Silver Birch	1+1: Transplant - seed raised: B	40-60cm	3Cr	3Cr
165 No.	<i>Corylus avellana</i>	Common Hazel	1+1: Transplant - seed raised: Branched: 2 brks: B	40-60cm	3Cr	3Cr
108 No.	<i>Malus sylvestris</i>	Common Crab Apple	1+1: Transplant - seed raised: B	60-80cm	3Cr	3Cr
108 No.	<i>Prunus avium</i>	Wild Cherry	Standard: 4 brks: 2x: B: Clear Stem 175-200cm. Girth 10-12cm	300-350cm	3Cr	3Cr
326 No.	<i>Quercus robur</i>	Common Oak	1+1: Transplant - seed raised: B	40-60cm	3Cr	3Cr
271 No.	<i>Tilia cordata</i>	Small-leaved Lime	1+1: Transplant - seed raised: B	60-80cm	3Cr	3Cr
Total: 1088 No.						

**TRANSLOCATED WOODLAND EDGE MIX - To be carried out within planting season, between October and March at locations indicated on plan. All trees to be planting in tree pits (300mm x 300mm x 300mm). Total Area 3,075 m<sup>2</sup> NT: Area consists of 50% proposed planting + 50 translocated planting @ 1m Centres**

No.	Species	Common Name	Specification	Height	Pot Size	Density (m centres)
71 No.	<i>Acer campestre</i>	Field Maple	1+1: Transplant - seed raised: B	60-80cm	2Cr	2Cr
39 No.	<i>Cornus sanguinea</i>	Dogwood	1+1: Transplant - seed raised: Branched: 2 brks: B	40-60cm	2Cr	2Cr
154 No.	<i>Corylus avellana</i>	Hazel	1+1: Transplant - seed raised: Branched: 2 brks: B	40-60cm	2Cr	2Cr
270 No.	<i>Crataegus monogyna</i>	Hawthorn	1+1: Transplant - seed raised: B	40-60cm	2Cr	2Cr
77 No.	<i>Ilex aquifolium</i>	Common Holly	Bushy: 2 brks: C	30-40cm	2L	2Cr
39 No.	<i>Malus sylvestris</i>	Common Crab Apple	1+1: Transplant - seed raised: B	60-80cm	2Cr	2Cr
77 No.	<i>Prunus spinosa</i>	Blackthorn	1+1: Transplant - seed raised: Branched: 2 brks: B	60-80cm	2Cr	2Cr
39 No.	<i>Viburnum opulus</i>	Guelder Rose	1+1: Transplant - seed raised: B	40-60cm	2Cr	2Cr
Total: 772 No.						

**NATIVE HEDGEROW MIX - To be carried out within planting season, between October and March. Planting trench to be cultivated to a depth of 450mm. Soil ameliorant to be added where appropriate. Planting area to be weeded with herbicide application. Total Length - 770m**

No.	Species	Common Name	Specification	Height	Pot Size	Density
260 No.	<i>Acer campestre</i>	Field Maple	1+1: Transplant - seed raised: B	60-80cm	0.3Cr	Double Staggered at 0.3m offset
771 No.	<i>Corylus avellana</i>	Hazel	1+1: Transplant - seed raised: Branched: 2 brks: B	40-60cm	0.3Cr	Double Staggered at 0.3m offset
3637 No.	<i>Crataegus monogyna</i>	Hawthorn	1+1: Transplant - seed raised: B	40-60cm	0.3Cr	Double Staggered at 0.3m offset
260 No.	<i>Ilex aquifolium</i>	Holly	Bushy: 2 brks: C	30-40cm	2L	0.3Cr Double Staggered at 0.3m offset
Total: 5128 No.						

**UPPER MARGINAL MIX - Total Area 1,090 m<sup>2</sup>**

No.	Species	Common Name	Specification	Height	Pot Size	Density
437 No.	<i>Hydrocotyle vulgaris</i>	Yellow Flag Iris	Full Pot: Sept to April planting: British Native-origin: C	0.5L	4m <sup>2</sup>	4m <sup>2</sup>
1388 No.	<i>Iris pseudacorus</i>	Purple Loosestrife	Full Pot: Sept to April planting: British Native-origin: C	0.5L	4m <sup>2</sup>	4m <sup>2</sup>
437 No.	<i>Lythrum salicaria</i>	Water Mint	Full Pot: Sept to April planting: British Native-origin: C	0.5L	4m <sup>2</sup>	4m <sup>2</sup>
437 No.	<i>Mentha aquatica</i>	Water Forget-me-not	Full Pot: Sept to April planting: British Native-origin: C	0.5L	4m <sup>2</sup>	4m <sup>2</sup>
873 No.	<i>Myosotis scorpioides</i>	Common Flew	Full Pot: Sept to April planting: British Native-origin: C	0.5L	4m <sup>2</sup>	4m <sup>2</sup>
437 No.	<i>Phagnolia australis</i>	Common Flew	Full Pot: Sept to April planting: British Native-origin: C	0.5L	4m <sup>2</sup>	4m <sup>2</sup>
437 No.	<i>Ranunculus sceleratus</i>	Celery-leaved Buttercup	Full Pot: Sept to April planting: British Native-origin: C	0.5L	4m <sup>2</sup>	4m <sup>2</sup>
Total: 4367 No.						

**CAR PARK PLANTING - Total Area of Vinca= 368m<sup>2</sup>; Ilex= 68m<sup>2</sup>**

No.	Species	Common Name	Specification	Height	Pot Size	Density
183 No.	<i>Ilex aquifolium</i>	Common Holly	Leader with Laterals: C	40-60cm	3L	4m <sup>2</sup>
1136 No.	<i>Vinca minor</i>	Lesser Periwinkle	Several Shoots: C	40-60cm	1L	4m <sup>2</sup>

**ADDITIONAL TREE PLANTING - To be carried out within planting season, between October and March at locations indicated on plan. All trees to be planted in tree pits as detailed in DWG.**

No.	Species	Common Name	Specification	Height	Girth	Density
6 No.	<i>Acer campestre</i>	Field Maple	10-12cm Standard: 4 brks: 2x: RB: Clear Stem 175-200cm	60-80cm	10-12cm	Counted
6 No.	<i>Prunus avium</i>	Wild Cherry	Selected Standard: 4 brks: 2x: RB: Clear Stem 175-200cm	300-350cm	10-12cm	Counted

**EXISTING WOODLAND - To be underplanted with 50 Hollies where required in gaps (Ilex aquifolium, spec as per proposed native woodland edge mix.)**

**TRANSPLANTED HEDGEROW - To be reinforced with 50 Hollies where required in gaps (Ilex aquifolium, spec as per proposed native hedgerow mix.)**

**AMENITY GRASS MIX - To be carried out within growing season, March to May or August to October. Germinol GB A22 Low Maintenance Seed Mix for Road and Path Verges (Seed application rate:50g/ m<sup>2</sup>) (www.germinolamenity.com/product/a22-low-maintenance) or similar. Seeded area to be cultivated to a depth of 250mm. Total Area - 3,930 m<sup>2</sup> within Red line boundary plus 10,000 m<sup>2</sup> to verges of access road to A120 (see HDA SA1).**

**PROPOSED GRASSCRETE QUARANTINE BAY - To be carried out within planting season, March to May or August to October. Germinol GB A22 Low Maintenance Seed Mix for Road and Path Verges (Seed application rate:50g/ m<sup>2</sup>) (www.germinolamenity.com/product/a22-low-maintenance) or similar. Seeded area to be cultivated to a depth of 250mm. Total Area - 135 m<sup>2</sup>.**

**PROPOSED SPECIES-RICH NEUTRAL GRASSLAND PRIORITY HABITAT - To be carried out within planting season, March to May or August to October. Emorsgate Seed EM1 - Basic general purpose meadow: (Seed application rate:4g/ m<sup>2</sup>) (website: www.wildseed.co.uk/mixtures/view/2/basic-general-purpose-meadow-mixture) or similar. Seeded area to be cultivated to a depth of 250mm. Total Area - 28,010 m<sup>2</sup> within Red line boundary plus 34,320m<sup>2</sup> to verges of access road to A120 (see HDA SA1).**

**PROPOSED OPEN MOSAIC GRASSLAND PRIORITY HABITAT - To be carried out within planting season, March to May or August to October. Emorsgate Seed EM1 - Basic general purpose meadow: (Seed application rate:4g/ m<sup>2</sup>) (website: www.wildseed.co.uk/mixtures/view/2/basic-general-purpose-meadow-mixture) or similar. Seeded area to be prepared with gravel and subsoil to a depth of 250mm. Total Area - 4,325 m<sup>2</sup>.**

- NATIVE WOODLAND EDGE MIX 01**
- 286 No. *Acer campestre*
  - 143 No. *Cornus sanguinea*
  - 571 No. *Corylus avellana*
  - 998 No. *Crataegus monogyna*
  - 286 No. *Ilex aquifolium*
  - 143 No. *Malus sylvestris*
  - 286 No. *Prunus spinosa*
  - 143 No. *Viburnum opulus*
- NATIVE WOODLAND MIX 01**
- 103 No. *Acer campestre*
  - 206 No. *Betula pendula*
  - 308 No. *Corylus avellana*
  - 103 No. *Malus sylvestris*
  - 206 No. *Prunus avium*
  - 616 No. *Quercus robur*
  - 513 No. *Tilia cordata*

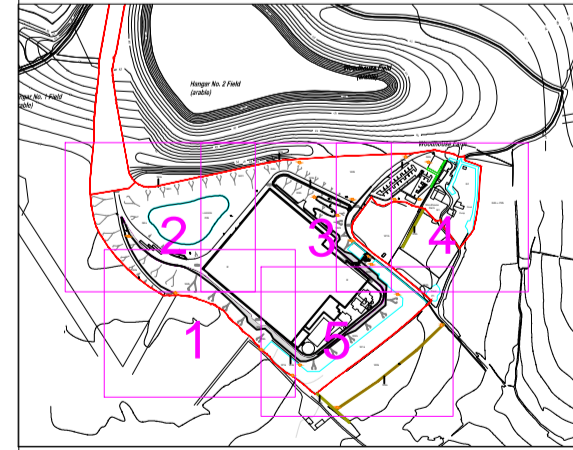
- NATIVE WOODLAND EDGE MIX 02**
- 65 No. *Acer campestre*
  - 93 No. *Cornus sanguinea*
  - 129 No. *Corylus avellana*
  - 429 No. *Crataegus monogyna*
  - 65 No. *Ilex aquifolium*
  - 93 No. *Malus sylvestris*
  - 65 No. *Prunus spinosa*
  - 33 No. *Viburnum opulus*

- NATIVE WOODLAND MIX 02**
- 9 No. *Acer campestre*
  - 17 No. *Betula pendula*
  - 25 No. *Corylus avellana*
  - 17 No. *Malus sylvestris*
  - 17 No. *Prunus avium*
  - 49 No. *Quercus robur*
  - 41 No. *Tilia cordata*

- NATIVE HEDGEROW MIX 08**
- 24 No. *Acer campestre*
  - 70 No. *Corylus avellana*
  - 347 No. *Crataegus monogyna*
  - 24 No. *Ilex aquifolium*

- NATIVE WOODLAND EDGE MIX 09**
- 14 No. *Acer campestre*
  - 7 No. *Cornus sanguinea*
  - 28 No. *Corylus avellana*
  - 48 No. *Crataegus monogyna*
  - 14 No. *Ilex aquifolium*
  - 7 No. *Malus sylvestris*
  - 14 No. *Prunus spinosa*
  - 7 No. *Viburnum opulus*

Note:  
 Rev A Dec 14 Add quarantine bay, extent of brown roof, etc.  
 Rev B Jan 15 Add Carpark planting  
 Rev C April 15 Revised layout  
 Rev D June 22 Revised layout  
 Rev E July 17 Add Soil Nailing  
 Rev F July 23 Revised Soil Nailing



CLIENT: Gent Fairhead & Co Ltd  
 PROJECT: IWMF, Rivenhall  
 TITLE: Soft Landscape Proposals Sheet 1 of 5  
 SCALE AT A1: 1:500 @ A1  
 DATE: July 2015

732/102F **HDA SL1**

