

- NATIVE WOODLAND PLANTING 03**
- 168 No. Acer campestre
 - 504 No. Betula pendula
 - 504 No. Corylus avellana
 - 168 No. Malus sylvestris
 - 338 No. Prunus avium
 - 1007 No. Quercus robur
 - 671 No. Tilia cordata

- NATIVE WOODLAND EDGE MIX 03**
- 241 No. Acer campestre
 - 121 No. Cornus sanguinea
 - 481 No. Corylus avellana
 - 961 No. Crataegus monogyna
 - 171 No. Ilex aquifolium
 - 121 No. Malus sylvestris
 - 241 No. Prunus spinosa
 - 121 No. Viburnum opulus

- NATIVE WOODLAND EDGE MIX 04**
- 14 No. Acer campestre
 - 27 No. Cornus sanguinea
 - 58 No. Crataegus monogyna
 - 7 No. Malus sylvestris
 - 14 No. Prunus spinosa
 - 7 No. Viburnum opulus

- NATIVE WOODLAND PLANTING 05**
- 3 No. Acer campestre
 - 9 No. Betula pendula
 - 9 No. Corylus avellana
 - 9 No. Malus sylvestris
 - 6 No. Prunus avium
 - 17 No. Quercus robur
 - 12 No. Tilia cordata

- SPECIES RICH GRASS MIX 03**
- 15 No. Ilex aquifolium

- SPECIES RICH GRASS MIX 04**
- 15 No. Ilex aquifolium

- AMENITY GRASS MIX 06**
- 2 No. Acer campestre
 - 15 No. Ilex aquifolium

- NATIVE HEDGEROW MIX 02**
- 30 No. Acer campestre
 - 90 No. Cornus avellana
 - 446 No. Crataegus monogyna
 - 30 No. Ilex aquifolium

- AMENITY GRASS MIX 05**
- 1 No. Acer campestre

- NATIVE HEDGEROW MIX 06**
- 8 No. Acer campestre
 - 8 No. Corylus avellana
 - 89 No. Crataegus monogyna
 - 9 No. Ilex aquifolium

- NATIVE HEDGEROW MIX 01**
- 28 No. Acer campestre
 - 83 No. Corylus avellana
 - 413 No. Crataegus monogyna
 - 28 No. Ilex aquifolium

- NATIVE HEDGEROW MIX 05**
- 5 No. Acer campestre
 - 27 No. Corylus avellana
 - 92 No. Crataegus monogyna
 - 5 No. Ilex aquifolium

- NATIVE HEDGEROW MIX 04**
- 14 No. Acer campestre
 - 90 No. Corylus avellana
 - 69 No. Crataegus monogyna
 - 14 No. Ilex aquifolium

- NATIVE WOODLAND EDGE MIX 07**
- 13 No. Acer campestre
 - 7 No. Cornus sanguinea
 - 25 No. Corylus avellana
 - 25 No. Crataegus monogyna
 - 7 No. Ilex aquifolium
 - 7 No. Malus sylvestris
 - 13 No. Prunus spinosa
 - 7 No. Viburnum opulus

- NATIVE WOODLAND EDGE MIX 06**
- 19 No. Acer campestre
 - 10 No. Cornus sanguinea
 - 38 No. Corylus avellana
 - 26 No. Crataegus monogyna
 - 10 No. Ilex aquifolium
 - 10 No. Malus sylvestris
 - 19 No. Prunus spinosa
 - 10 No. Viburnum opulus

- SPECIES RICH GRASS MIX 03**
- 15 No. Ilex aquifolium

- NATIVE HEDGEROW MIX 03**
- 14 No. Acer campestre
 - 90 No. Corylus avellana
 - 69 No. Crataegus monogyna
 - 14 No. Ilex aquifolium

- NATIVE WOODLAND PLANTING 06**
- 3 No. Acer campestre
 - 9 No. Betula pendula
 - 9 No. Corylus avellana
 - 9 No. Malus sylvestris
 - 6 No. Prunus avium
 - 17 No. Quercus robur
 - 12 No. Tilia cordata

- NATIVE WOODLAND PLANTING 04**
- 3 No. Acer campestre
 - 9 No. Betula pendula
 - 9 No. Corylus avellana
 - 9 No. Malus sylvestris
 - 6 No. Prunus avium
 - 17 No. Quercus robur
 - 12 No. Tilia cordata

- NATIVE WOODLAND PLANTING 02**
- 3 No. Acer campestre
 - 9 No. Betula pendula
 - 9 No. Corylus avellana
 - 9 No. Malus sylvestris
 - 6 No. Prunus avium
 - 17 No. Quercus robur
 - 12 No. Tilia cordata

- NATIVE WOODLAND PLANTING 01**
- 3 No. Acer campestre
 - 9 No. Betula pendula
 - 9 No. Corylus avellana
 - 9 No. Malus sylvestris
 - 6 No. Prunus avium
 - 17 No. Quercus robur
 - 12 No. Tilia cordata

- NATIVE WOODLAND PLANTING 07**
- 3 No. Acer campestre
 - 9 No. Betula pendula
 - 9 No. Corylus avellana
 - 9 No. Malus sylvestris
 - 6 No. Prunus avium
 - 17 No. Quercus robur
 - 12 No. Tilia cordata

- NATIVE WOODLAND PLANTING 08**
- 3 No. Acer campestre
 - 9 No. Betula pendula
 - 9 No. Corylus avellana
 - 9 No. Malus sylvestris
 - 6 No. Prunus avium
 - 17 No. Quercus robur
 - 12 No. Tilia cordata

- NATIVE WOODLAND PLANTING 09**
- 3 No. Acer campestre
 - 9 No. Betula pendula
 - 9 No. Corylus avellana
 - 9 No. Malus sylvestris
 - 6 No. Prunus avium
 - 17 No. Quercus robur
 - 12 No. Tilia cordata

- NATIVE WOODLAND PLANTING 10**
- 3 No. Acer campestre
 - 9 No. Betula pendula
 - 9 No. Corylus avellana
 - 9 No. Malus sylvestris
 - 6 No. Prunus avium
 - 17 No. Quercus robur
 - 12 No. Tilia cordata

- NATIVE WOODLAND PLANTING 11**
- 3 No. Acer campestre
 - 9 No. Betula pendula
 - 9 No. Corylus avellana
 - 9 No. Malus sylvestris
 - 6 No. Prunus avium
 - 17 No. Quercus robur
 - 12 No. Tilia cordata

- NATIVE WOODLAND PLANTING 12**
- 3 No. Acer campestre
 - 9 No. Betula pendula
 - 9 No. Corylus avellana
 - 9 No. Malus sylvestris
 - 6 No. Prunus avium
 - 17 No. Quercus robur
 - 12 No. Tilia cordata

- NATIVE WOODLAND PLANTING 13**
- 3 No. Acer campestre
 - 9 No. Betula pendula
 - 9 No. Corylus avellana
 - 9 No. Malus sylvestris
 - 6 No. Prunus avium
 - 17 No. Quercus robur
 - 12 No. Tilia cordata

- NATIVE WOODLAND PLANTING 14**
- 3 No. Acer campestre
 - 9 No. Betula pendula
 - 9 No. Corylus avellana
 - 9 No. Malus sylvestris
 - 6 No. Prunus avium
 - 17 No. Quercus robur
 - 12 No. Tilia cordata

- NATIVE WOODLAND PLANTING 15**
- 3 No. Acer campestre
 - 9 No. Betula pendula
 - 9 No. Corylus avellana
 - 9 No. Malus sylvestris
 - 6 No. Prunus avium
 - 17 No. Quercus robur
 - 12 No. Tilia cordata

- NATIVE WOODLAND PLANTING 16**
- 3 No. Acer campestre
 - 9 No. Betula pendula
 - 9 No. Corylus avellana
 - 9 No. Malus sylvestris
 - 6 No. Prunus avium
 - 17 No. Quercus robur
 - 12 No. Tilia cordata

- NATIVE WOODLAND PLANTING 17**
- 3 No. Acer campestre
 - 9 No. Betula pendula
 - 9 No. Corylus avellana
 - 9 No. Malus sylvestris
 - 6 No. Prunus avium
 - 17 No. Quercus robur
 - 12 No. Tilia cordata

- NATIVE WOODLAND PLANTING 18**
- 3 No. Acer campestre
 - 9 No. Betula pendula
 - 9 No. Corylus avellana
 - 9 No. Malus sylvestris
 - 6 No. Prunus avium
 - 17 No. Quercus robur
 - 12 No. Tilia cordata

- NATIVE WOODLAND PLANTING 19**
- 3 No. Acer campestre
 - 9 No. Betula pendula
 - 9 No. Corylus avellana
 - 9 No. Malus sylvestris
 - 6 No. Prunus avium
 - 17 No. Quercus robur
 - 12 No. Tilia cordata

- NATIVE WOODLAND PLANTING 20**
- 3 No. Acer campestre
 - 9 No. Betula pendula
 - 9 No. Corylus avellana
 - 9 No. Malus sylvestris
 - 6 No. Prunus avium
 - 17 No. Quercus robur
 - 12 No. Tilia cordata

- KEY**
- Site Boundary
 - Existing Vegetation
 - Proposed Barrier Fencing
 - Proposed Retaining Wall
 - Proposed Woodland Mix
 - Proposed Woodland Edge Mix
 - Proposed Rabbit Proof Fencing
 - Proposed Amenity Grassland
 - Proposed Species-Rich Neutral Grassland Priority Habitat
 - Proposed Open Habitat (for GCN)
 - Proposed Shrub Planting in Carpark
 - Proposed Tree Planting in Carpark
 - Extent of Brown Roof Habitat
 - Proposed Vehicle Deterrent Paving
 - Extent of A1 Planting Plan Sheets

Woodhouse Farm
Pond
Pump

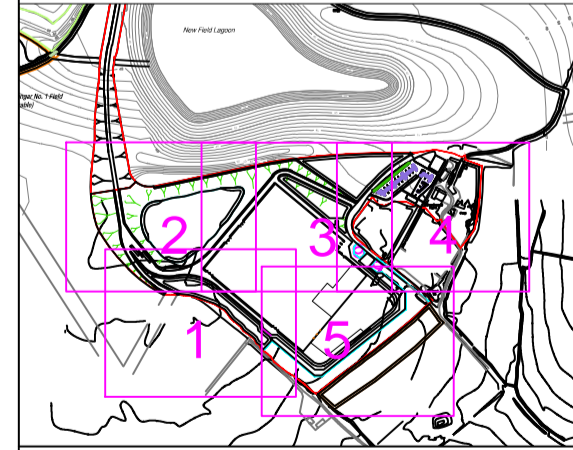
+48.3m

+48.5m

+35.0m

+30.0m

Note:
Rev A Dec 14 Add quarantine bay, extent of brown roof, etc.
Rev B Jan 15 Add Carpark planting



CLIENT:
Gent Fairhead & Co Ltd
PROJECT:
eRCF, Rivenhall
TITLE:
Soft Landscape Proposals Sheet 4 of 5
SCALE AT A1:
1:500 @ A1
DATE:
January 2015

732/1058 HDA SL4

Based on Ordnance Survey mapping with permission of Her Majesty's Stationery Office License No. 1000222
© hudson duckett associates
The Station, Hove Park, Broom Lane, Worthing, BN10 8BA
01243 880719 • contact@hudson-duckett.co.uk • www.hudson-duckett.co.uk

