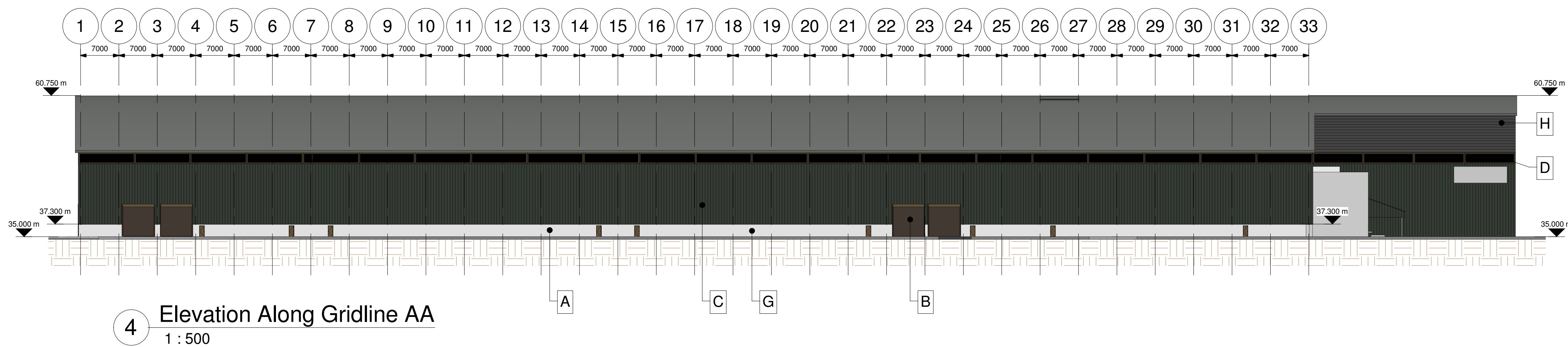
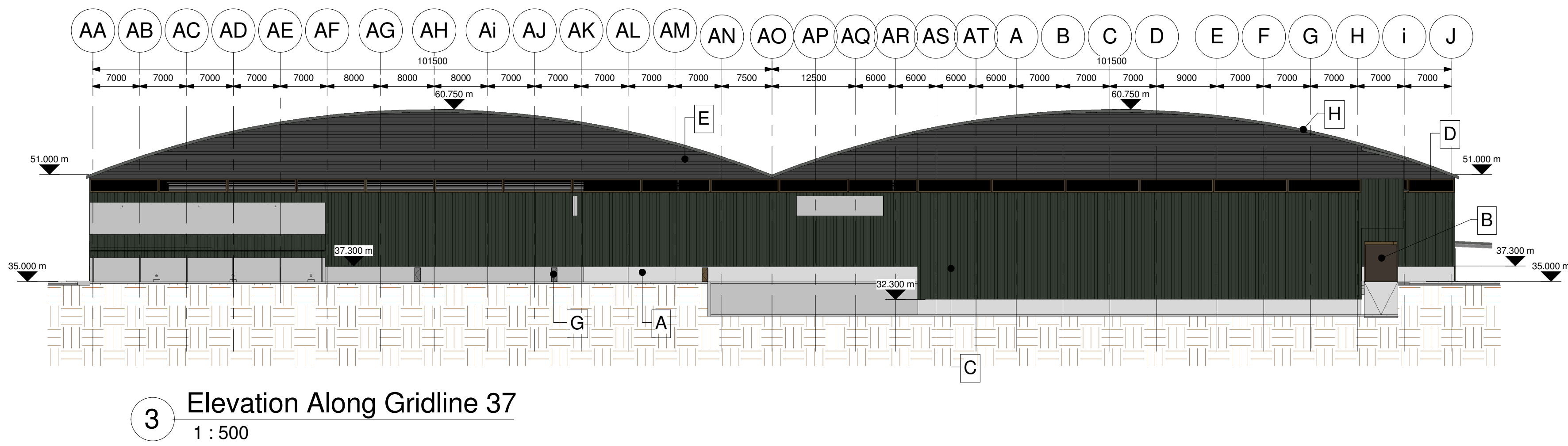
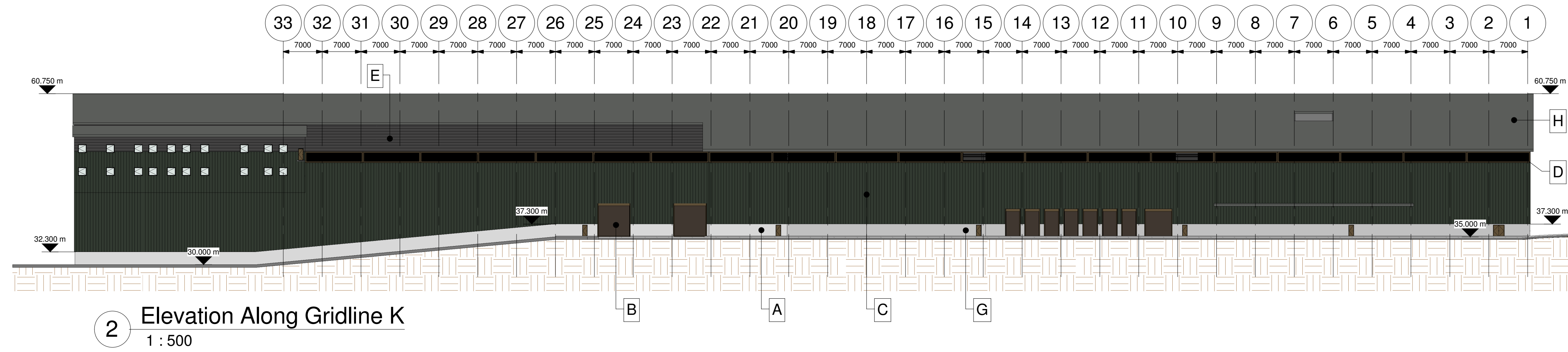


- Key**
- A - 2.4m min. high concrete wall
  - B - dark brown roller shutter doors with perimeter dark brown feature cladding to resemble timber
  - C - vertical trapezoidal cladding (Eurobond Rockspan composite panels), colour dark green
  - D - dark brown louvres to resemble timber cladding
  - E - horizontal trapezoidal cladding (Eurobond Rockspan composite panels), colour grey
  - F - windows with white feature steel framing
  - G - dark brown steel personnel/fire doors
  - H - Living roof consisting of sedum foliage, anti-slip system, water retention layer drainage mat and bonded waterproof membrane to roof insulation



E	Key revised as clouded	ROS	ABM	11.12.15
D	Door layout amended to suit planning	DS	ABM	03.12.15
C	Building elevations updated to suit latest layout.	CL	ABM	24.09.15
B	Personnel door added to elevation on gridline 1. Extent of building revised to suit latest H2I EW equipment layout. Broken runway concrete laid on roof increased to 50mm from 25mm.	CL		31.10.14
A	Building extension added over EIW area.	CL	ABM	27.08.14
Rev	Revision Description	By	Clk	Date

**Melia Smith & Jones**  
Consulting Civil & Structural Engineers

Vinery Court, 58 Cardigan Lane, LEEDS LS4 2LD.  
Tel: 0113 2306080 Fax: 0113 2208900

**Rivenhall IWFM**

**Building Elevations**

Scales			Sheet Size	
1 : 500			A1	
Drawn	Checked	Approved	Date	
CL	ABM		15.07.14	
Drg No			Rev	
213033 / 130			E	