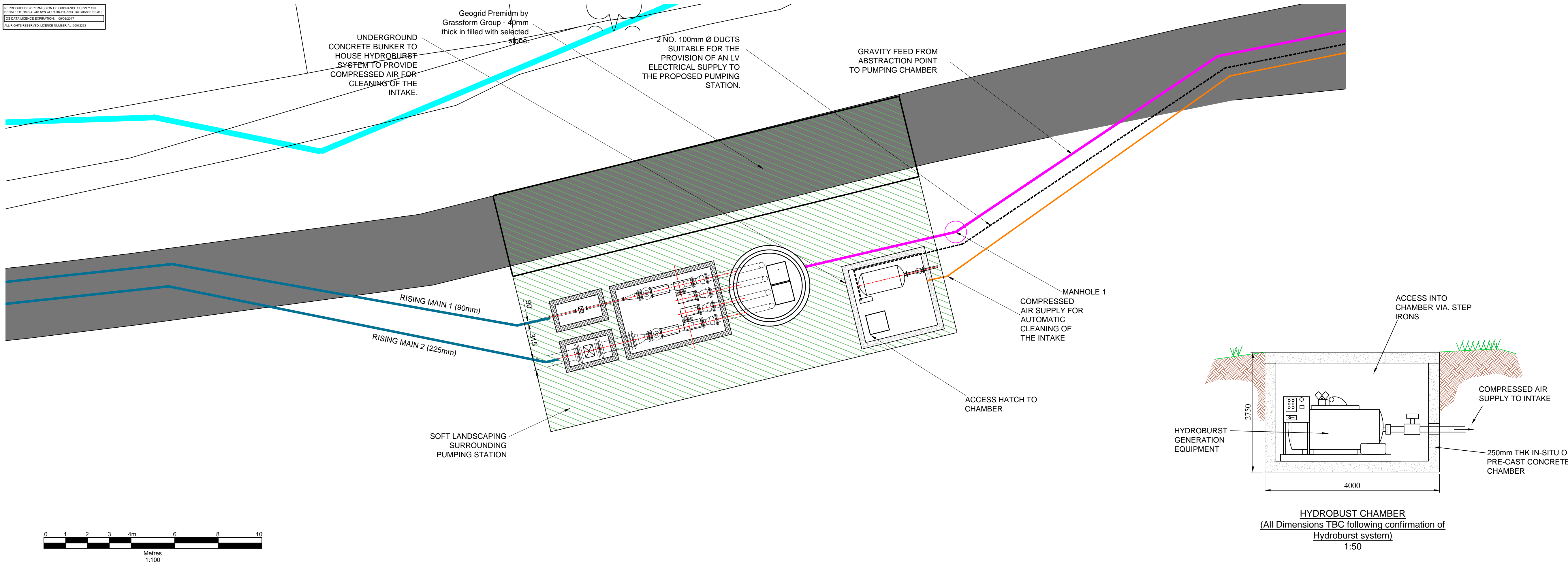


REPRODUCED BY PERMISSION OF ORDNANCE SURVEY ON BEHALF OF BRAD. COPIES OF PRINTS AND DATABASE RIGHT. OS DATA LICENSE EXPIRES 08/06/2017. ALL RIGHTS RESERVED. LICENSE NUMBER AL10012004



PLAN ON PUMPING STATION (1:100)

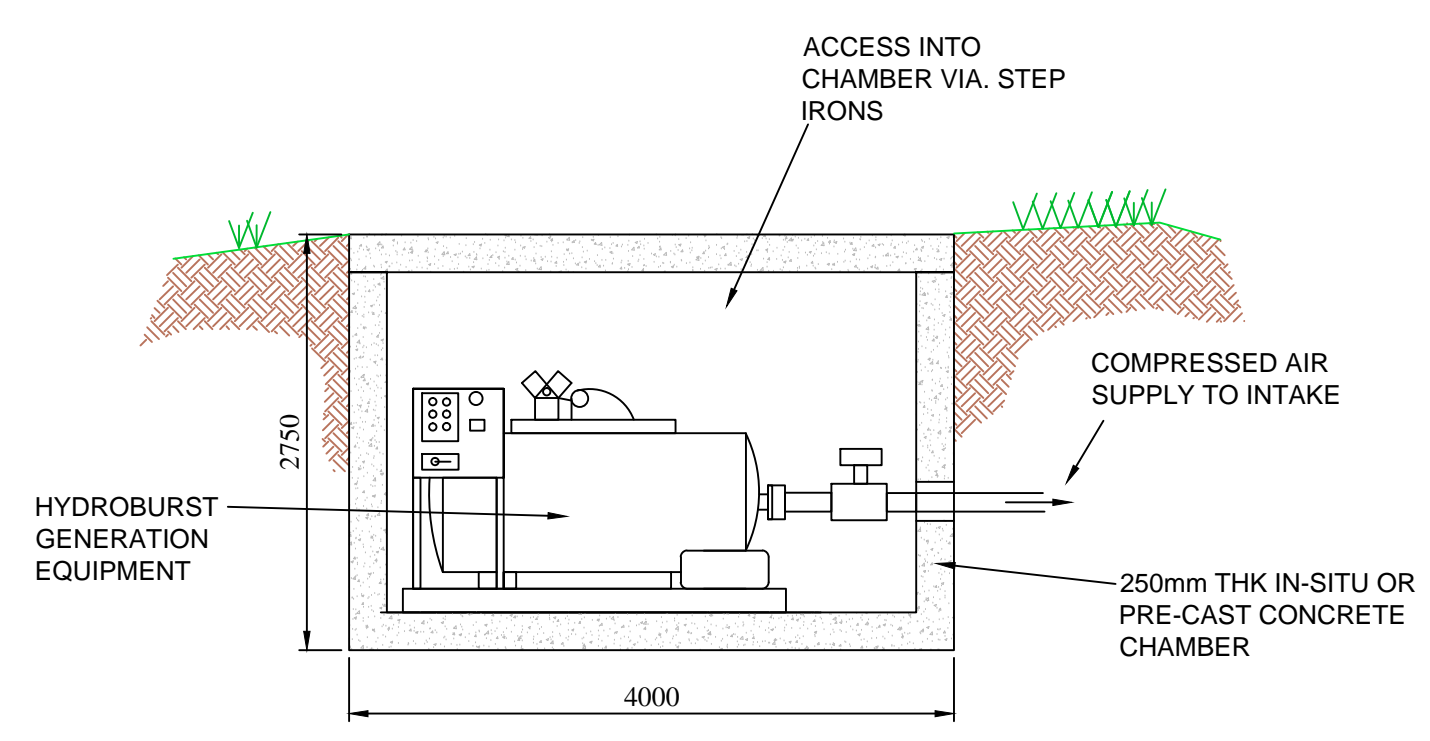
NOTES

RIVER BLACKWATER SURVEY INFORMATION

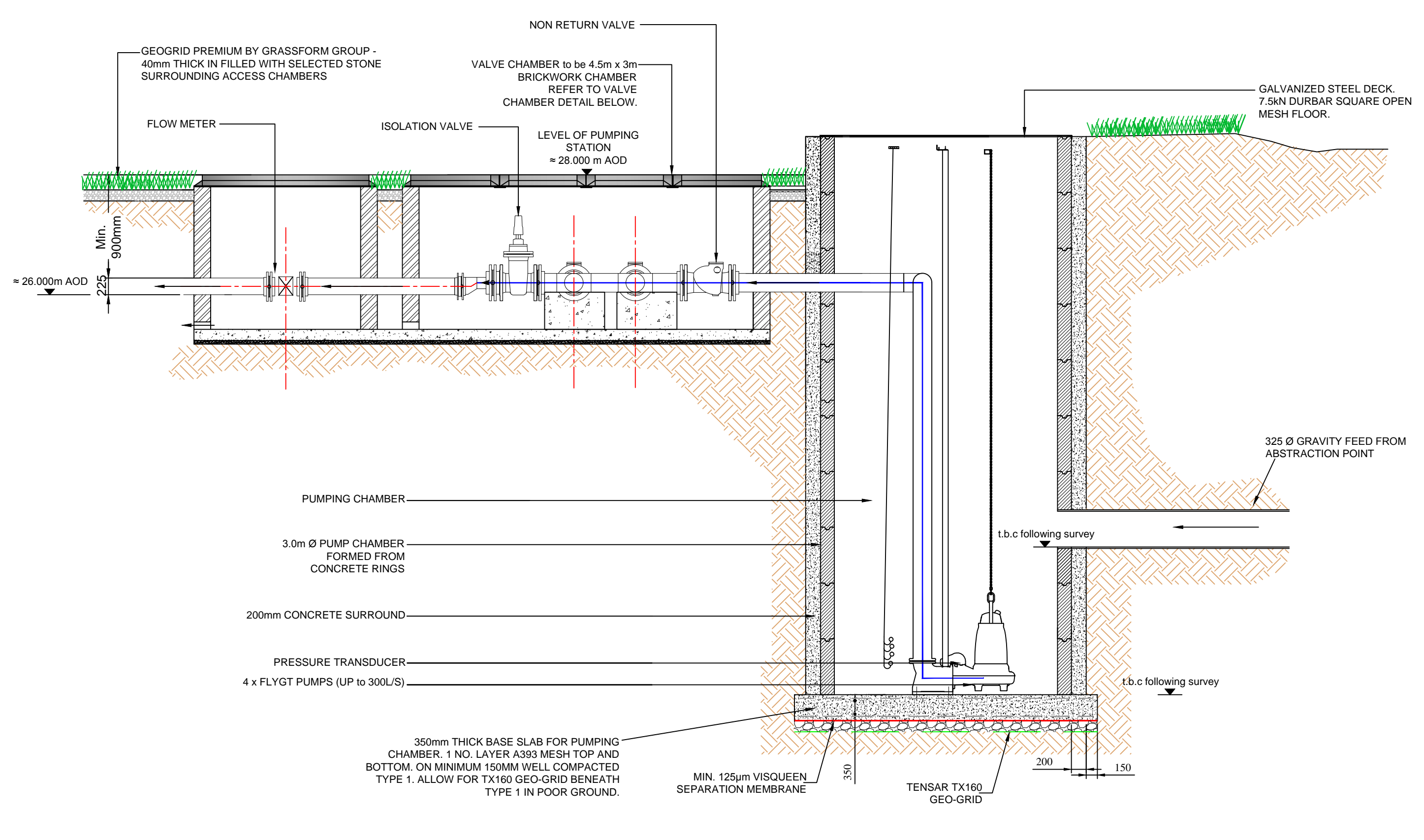
Abstraction details are based on the most reliable information available. A local site survey will be required prior to construction to confirm design details.

LEGEND

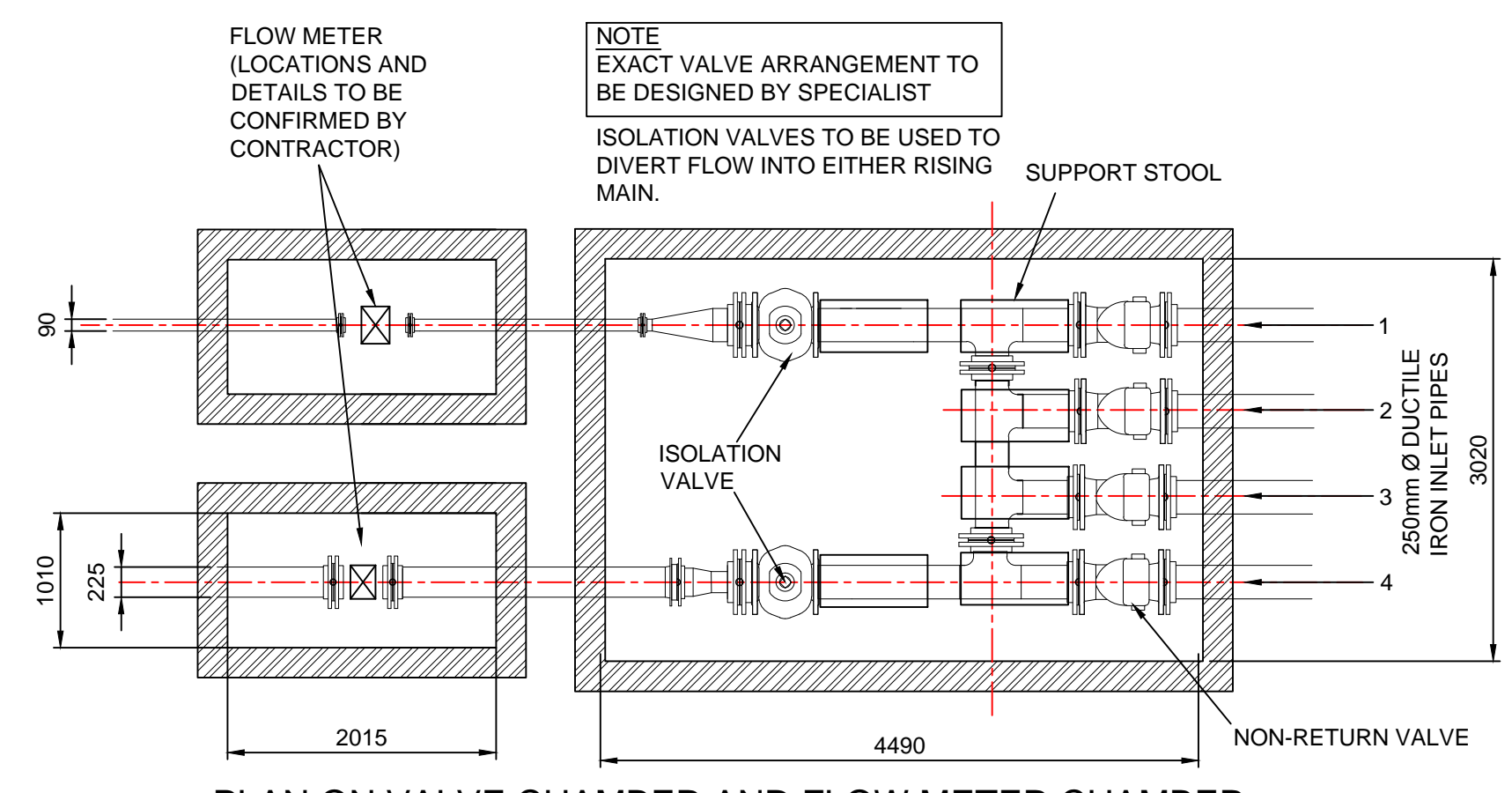
- PROPOSED GRAVITY FEED TO PUMP STATION
- PROPOSED RIVER ABSTRACTION RISING MAIN ROUTE
- APPROXIMATE EXTENT OF FLOOD PLAIN (FROM ENVIRONMENT AGENCY MAPPING)
- PROPOSED GRAVEL ACCESS ROAD
- PROPOSED HB2 KERB LINE



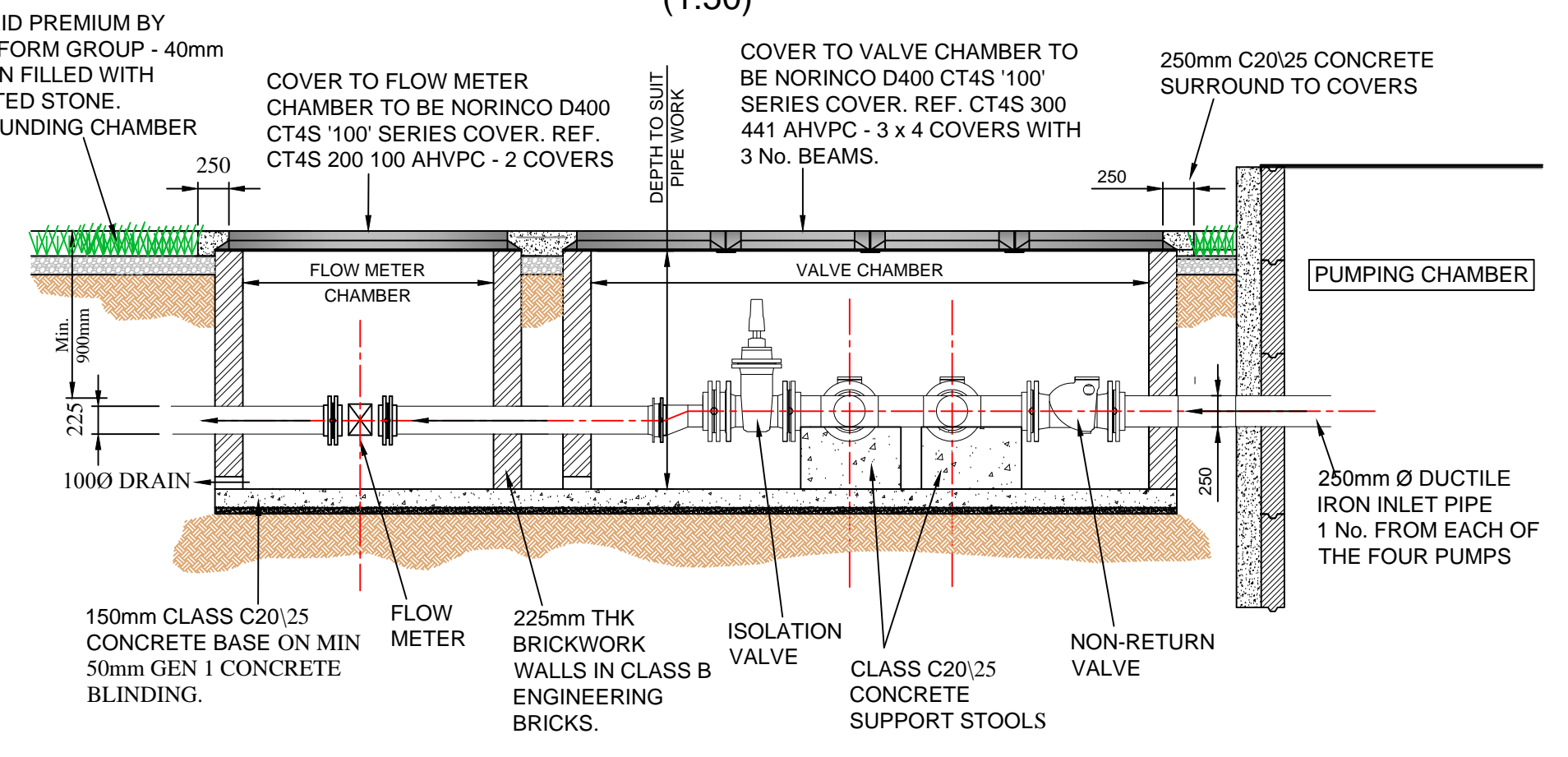
HYDROBURST CHAMBER (All Dimensions TBC following confirmation of Hydroburst system) 1:50



SECTION THROUGH PROPOSED PUMPING CHAMBER (1:50)



PLAN ON VALVE CHAMBER AND FLOW METER CHAMBER (1:50)



SECTION THROUGH VALVE CHAMBER AND FLOW METER CHAMBER (1:50)

Revision	By	Chk'd By	Date	Comments
2	PS	GR	Aug 16	Draft
1	IMR	GR	July 16	Draft
0	IMR	DP	Sept 16	Draft

Gent Fairhead & Co. Ltd.

SLR CONSULTING

TREWOOD HOUSE
ROWDEN LANE
BRADFORD-ON-AVON
WILTS. BA15 2AU
T: 01225 309400
F: 01225 309401
www.slrc consulting.com

Site: RIVENHALL AIRFIELD

Project: River Blackwater Abstraction

Drawing Title: **PROPOSED ABSTRACTION POINT PUMPING STATION DETAILS**

Scale: AS SHOWN Date: JULY 2016

Drawing Number: **106** Revision: **2**

DRAFT

462.00007.00004.07.106.2 - Proposed Abstraction Point Pumping Station Details.dwg