

# Sequence 1

Commence construction of Sheepcots Lagoon. Cut material from lagoon base to be used to form lagoon walls. Excess material to be placed and compacted in quarry void. Design by others

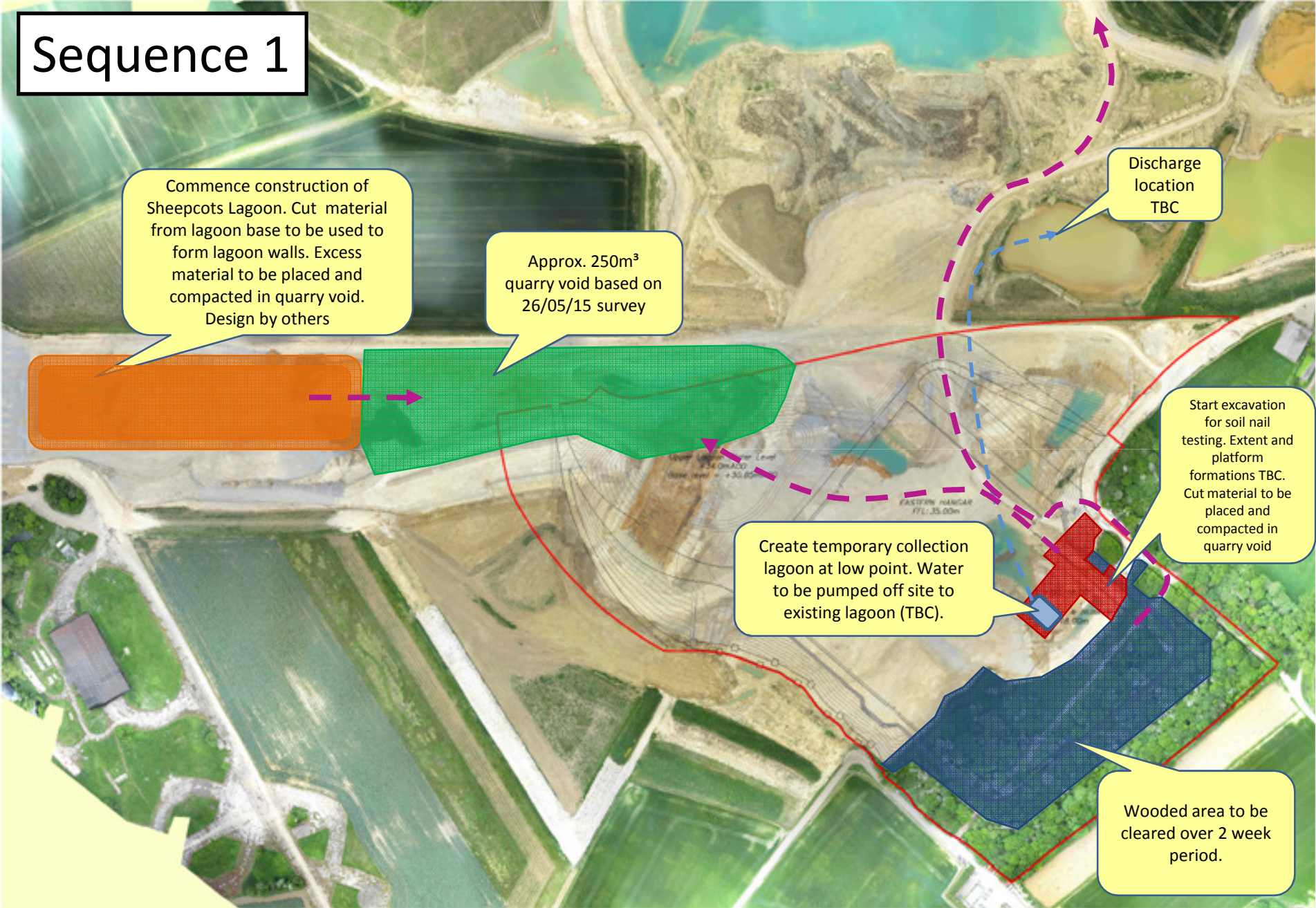
Approx. 250m<sup>3</sup> quarry void based on 26/05/15 survey

Discharge location TBC

Start excavation for soil nail testing. Extent and platform formations TBC. Cut material to be placed and compacted in quarry void

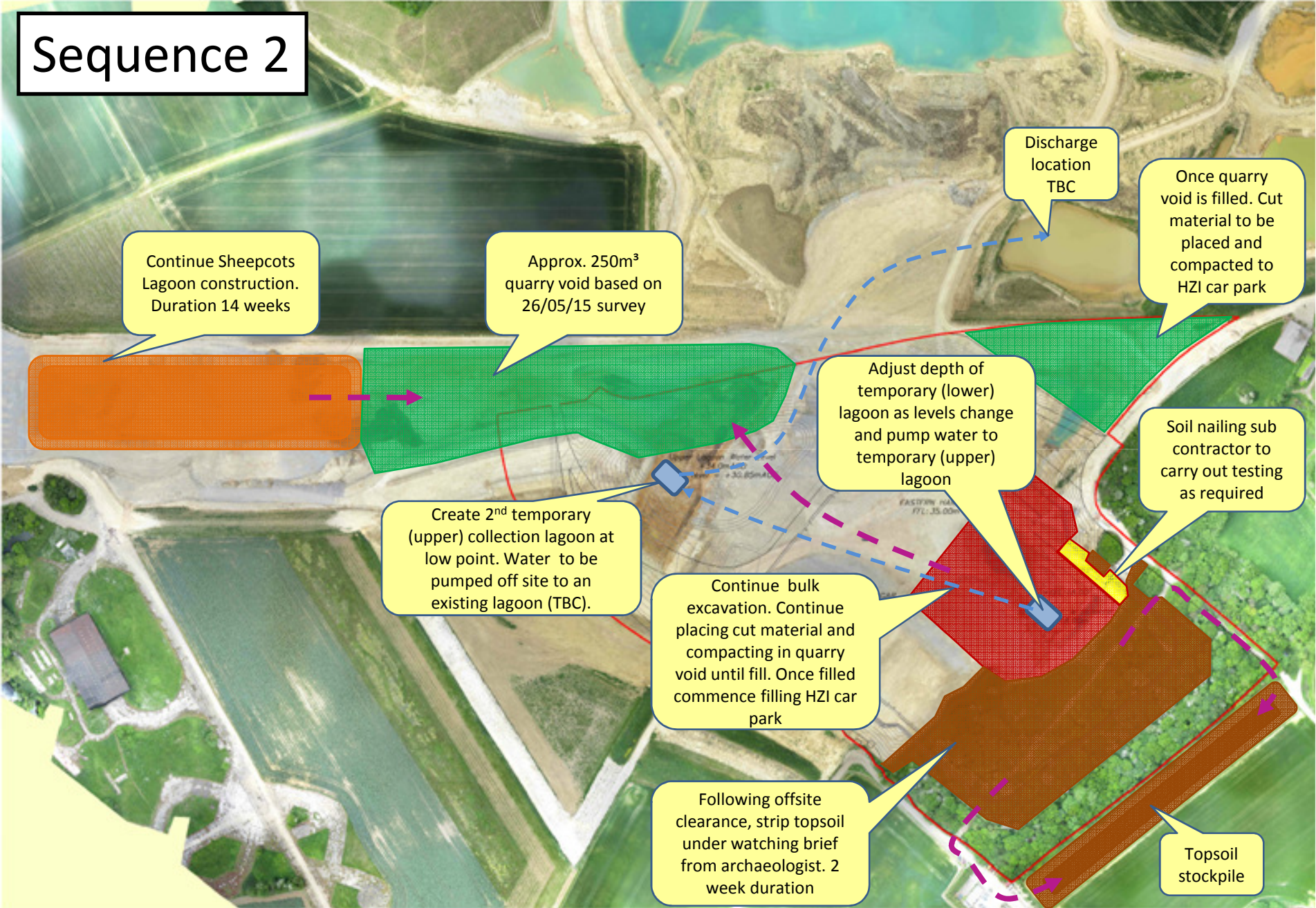
Create temporary collection lagoon at low point. Water to be pumped off site to existing lagoon (TBC).

Wooded area to be cleared over 2 week period.





# Sequence 2

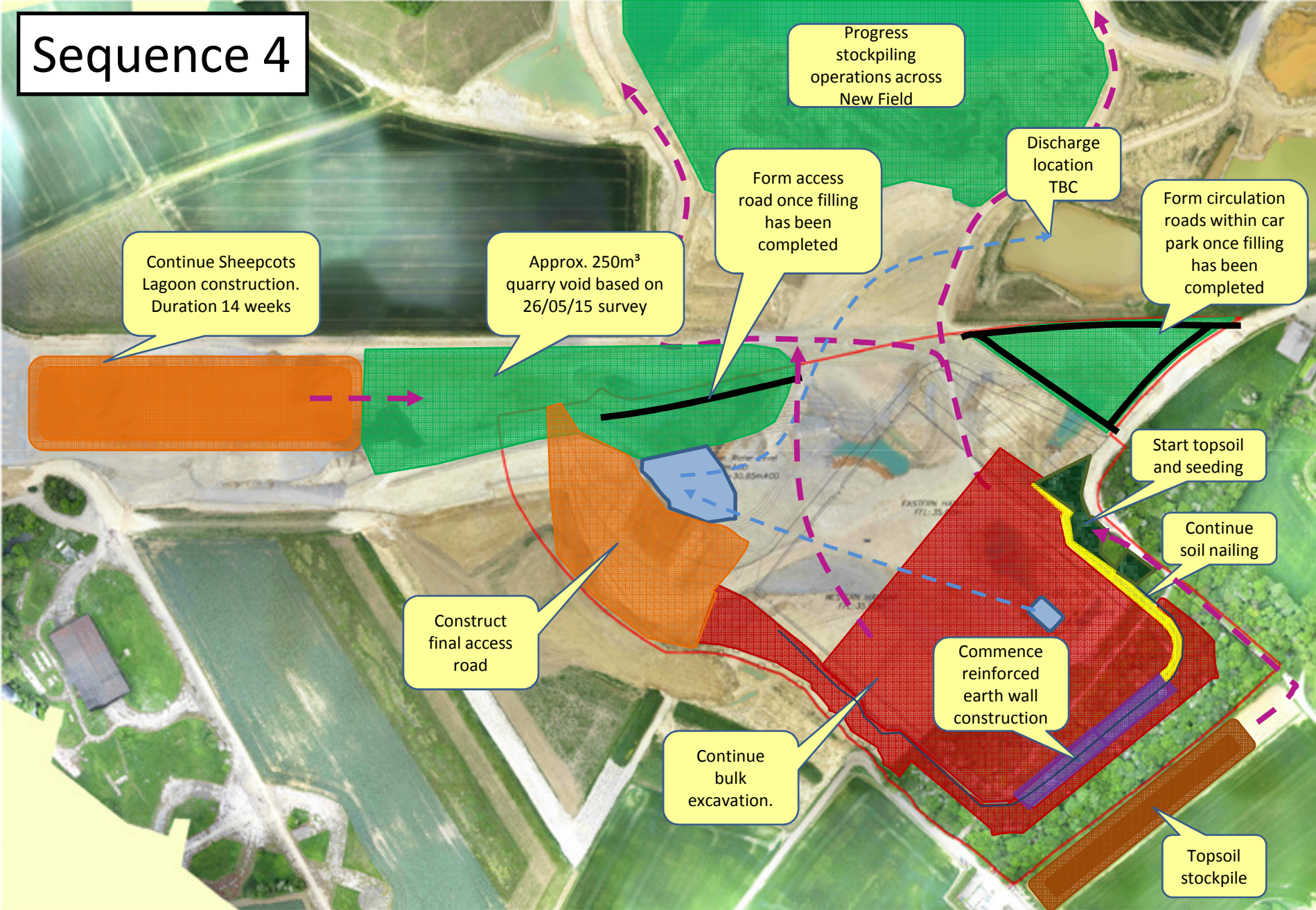






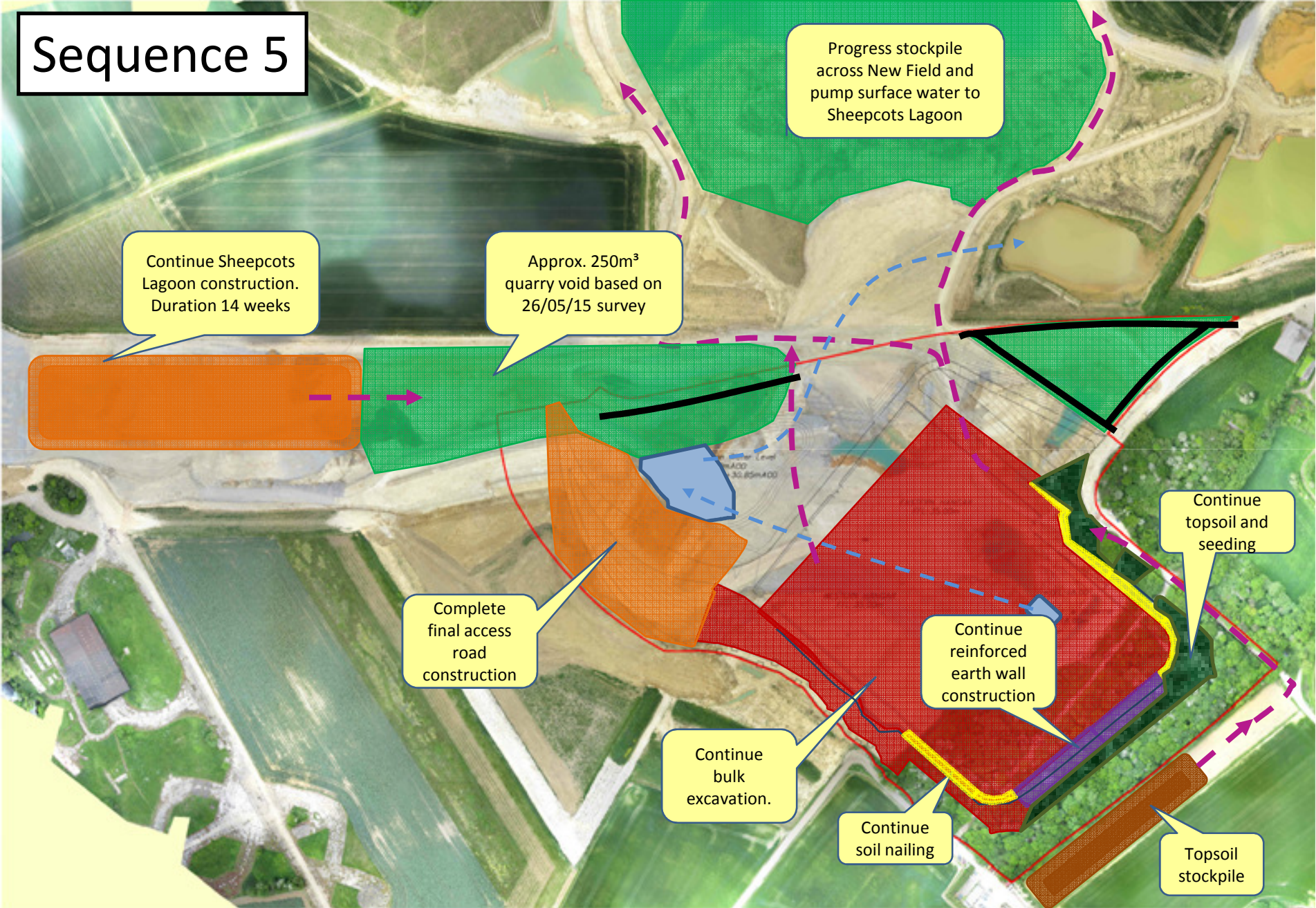


# Sequence 4





# Sequence 5



Continue Sheepcots Lagoon construction. Duration 14 weeks

Approx. 250m<sup>3</sup> quarry void based on 26/05/15 survey

Progress stockpile across New Field and pump surface water to Sheepcots Lagoon

Continue topsoil and seeding

Complete final access road construction

Continue reinforced earth wall construction

Continue bulk excavation.

Continue soil nailing

Topsoil stockpile

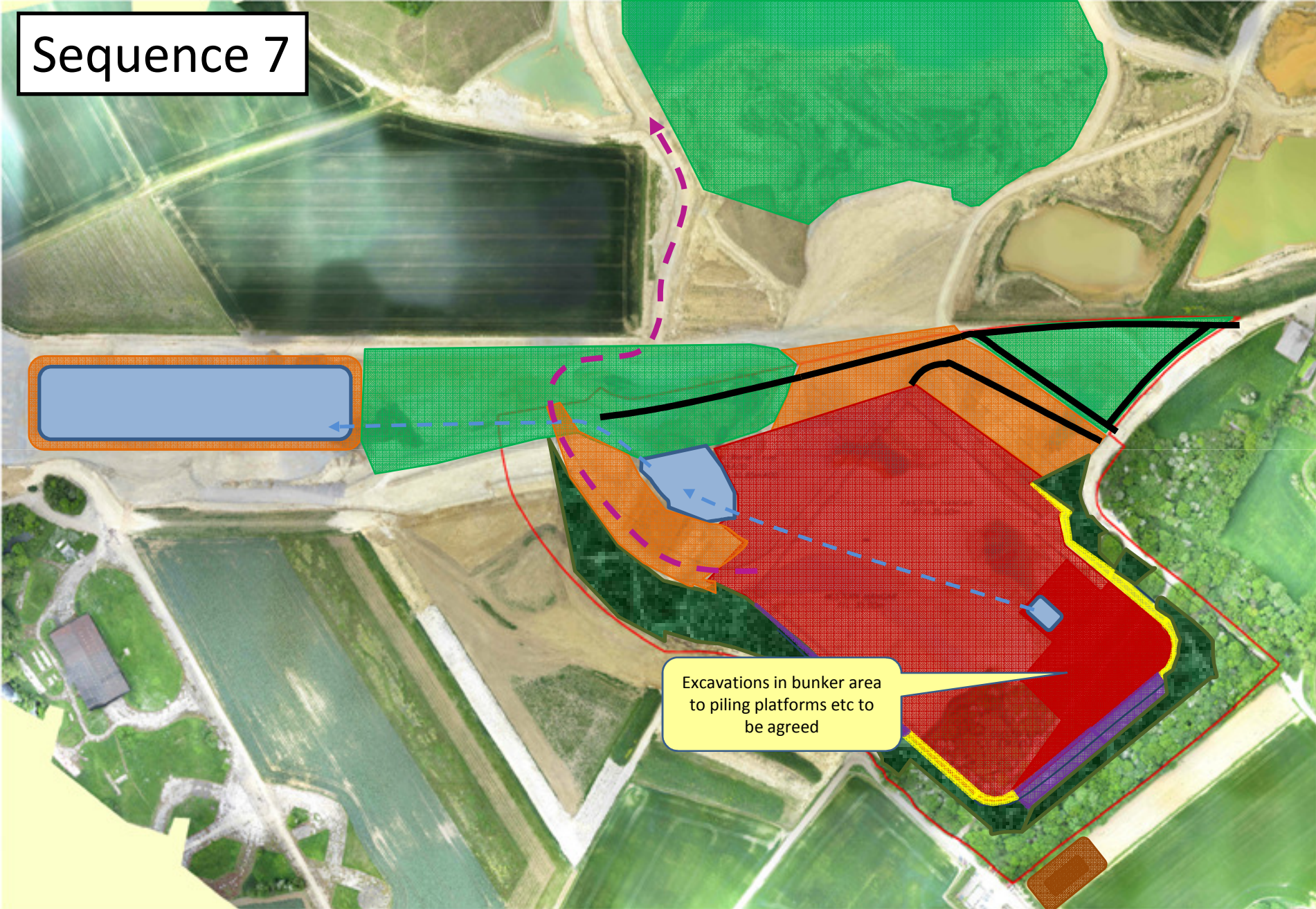


# Sequence 6





# Sequence 7



Excavations in bunker area to piling platforms etc to be agreed