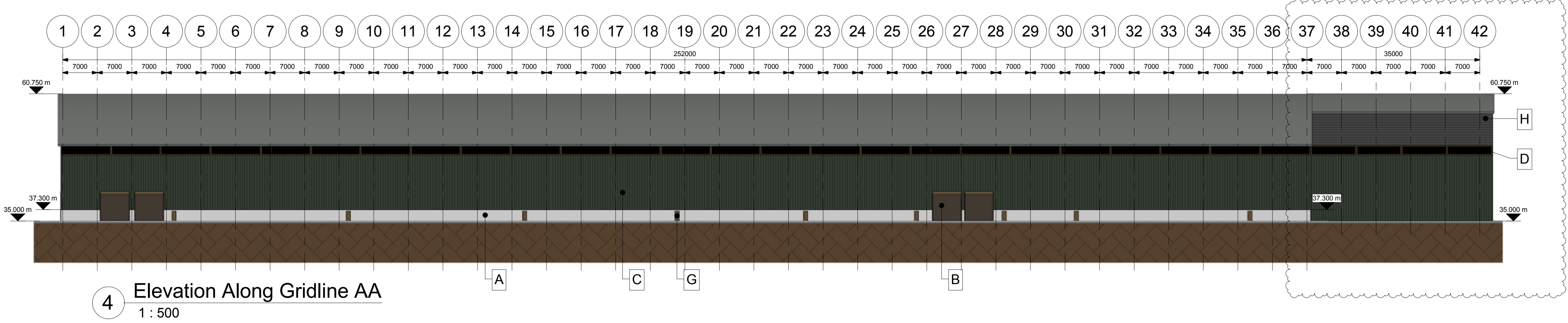
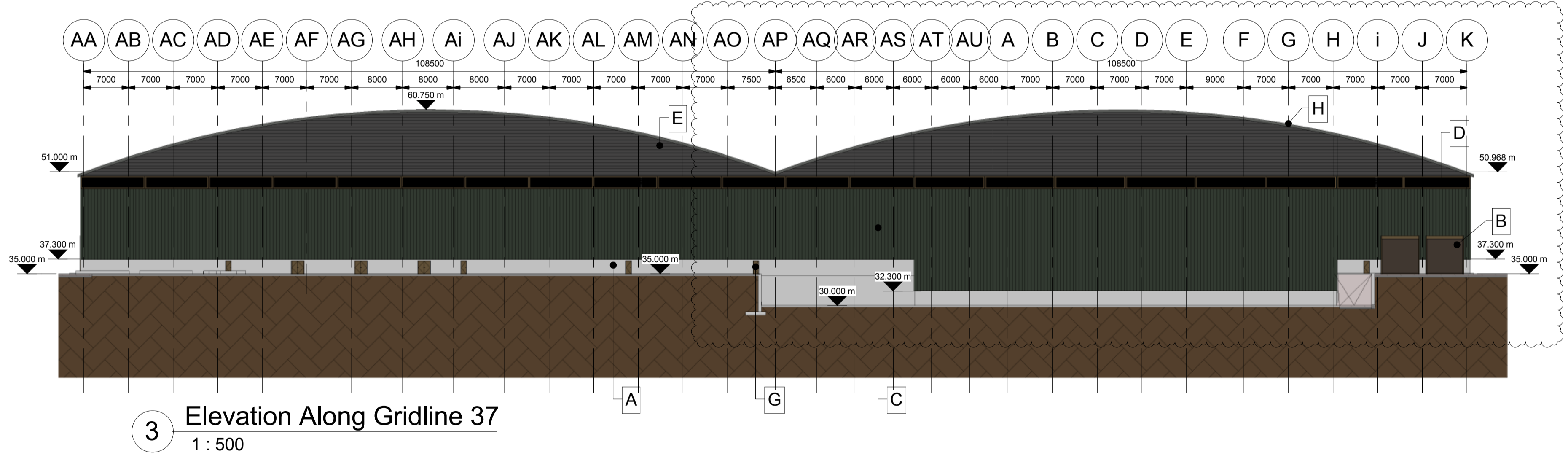
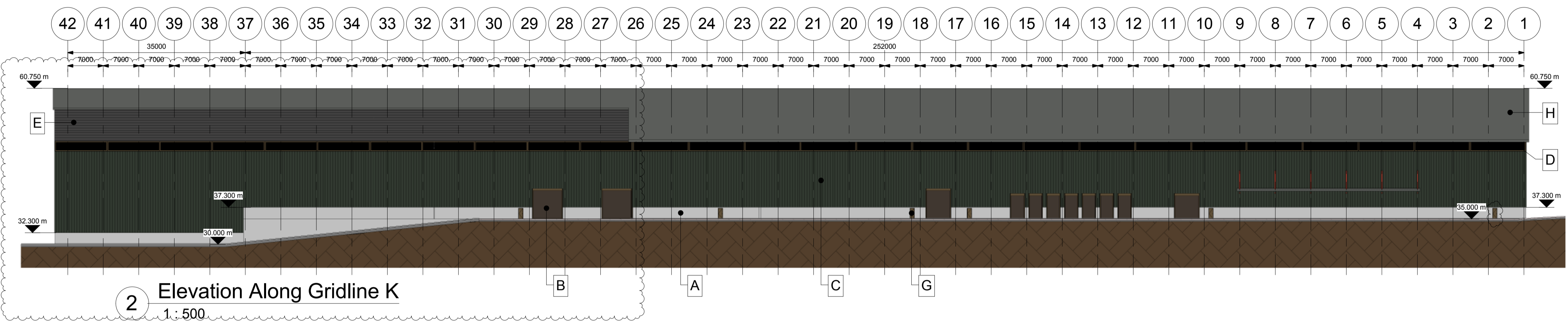


- Key**
- A - 2.4m min. high concrete wall
  - B - dark brown roller shutter doors with perimeter dark brown feature cladding to resemble timber
  - C - vertical trapezoidal cladding, colour dark green
  - D - dark brown louvres to resemble timber cladding
  - E - horizontal trapezoidal cladding, colour grey
  - F - windows with white feature steel framing
  - G - dark brown steel personnel/fire doors
  - H - Living roof consisting of protection fleece, water retention and drainage board with bonded filter fleece and 50mm of broken runway concrete (or similar) treated with fertiliser to encourage lichen growth



B	Personnel door added to elevation on gridline 1. Extent of building revised to suit latest H21 EW equipment layout. Broken runway concrete laid on roof increased to 50mm from 25mm.	CL		31.10.14
A	Building extension added over EW area.	CL	ABM	27.08.14
Rev	Revision Description	By	CLK	Date

**Melia Smith & Jones**  
Consulting Civil & Structural Engineers

Vinery Court, 58 Cardigan Lane, LEEDS LS4 2LD.  
Tel: 0113 2306080 Fax: 0113 2208900

**Recycling & Composting Facility,  
Rivenhall Airfield**

**Fichtner**

**Building Elevations**

Scales <b>1 : 500</b>			Sheet Size <b>A1</b>
Drawn <b>CL</b>	Checked <b>ABM</b>	Approved	Date <b>15.07.14</b>
Drg No <b>213033 / 130</b>			Rev <b>B</b>