

- HMP SUB-ZONES
  - W1a Retained woodland within red line boundary;
  - W1b Retained developing woodland outside the red line boundary;
  - W2a Translocated woodland/hedge with newly planted woodland (half of total area);
  - W2b Newly planted woodland;
  - W3a Newly planted hedgerows (including those in the car park);
  - W3b Retained hedgerow (gapped up);
  - G1 Retained grassland to east and south of Woodhouse Farm;
  - G2a Newly sown grassland though not differentiating between amenity grass and species rich neutral grassland;
  - G2b Natural regeneration grassland (Existing Open Habitat for GCN), outside the red line boundary;
  - G01 Newly created open mosaic grassland (two patches adjacent to northern boundary);
  - P1 An existing woodland pond to the south east of the Site, outside the red line boundary;
  - P2a Newly created ditch with standing water to perimeter of G2b (Open Habitat for GCN habitat);
  - P2b Newly created Upper Lagoon;
  - R Green roof (part of Zone BR); and
  - SNW Brownfield wall habitat (soil nail walling, part of Zone BR)

### PROPOSED PLANTING

#### NATIVE WOODLAND MIX - To be carried out within planting season, between October and March at locations indicated on plan. All trees to be planting in tree pits (300mm x 300mm x 300mm). Total Area 14,925 m<sup>2</sup> NT

No.	Species	Common Name	Specification	Height	Pot Size	Density (m centres)
328 No.	<i>Acer campestre</i>	Field Maple	1+1: Transplant - seed raised: B	60-80cm	1.5Cr	1Cr
667 No.	<i>Betula pendula</i>	Silver Birch	1+1: Transplant - seed raised: B	40-60cm	1.5Cr	1.5Cr
558 No.	<i>Corylus avellana</i>	Hazel	1+1: Transplant - seed raised: Branched: 2 brks: B	40-60cm	1.5Cr	1.5Cr
336 No.	<i>Malus sylvestris</i>	Crab Apple	1+1: Transplant - seed raised: B	60-80cm	1.5Cr	1.5Cr
667 No.	<i>Prunus avium</i>	Wild Cherry	Standard: 4 brks: 2x: B: Clear Stem 175-200cm, Girth 10-12cm	300-350cm	1.5Cr	1.5Cr
1983 No.	<i>Quercus robur</i>	Pendunculate Oak	1+1: Transplant - seed raised: B	40-60cm	1.5Cr	1.5Cr
1661 No.	<i>Tilia cordata</i>	Small-leaved Lime	1+1: Transplant - seed raised: B	60-80cm	1.5Cr	1.5Cr
Total: 6659 No.						

#### NATIVE WOODLAND EDGE MIX - To be carried out within planting season, between October and March at locations indicated on plan. All trees to be planting in tree pits (300mm x 300mm x 300mm). Total Area 12,250 m<sup>2</sup> NT:

No.	Species	Common Name	Specification	Height	Pot Size	Density (m centres)
1141 No.	<i>Acer campestre</i>	Field Maple	1+1: Transplant - seed raised: B	60-80cm	1Cr	1Cr
574 No.	<i>Cornus sanguinea</i>	Dogwood	1+1: Transplant - seed raised: Branched: 2 brks: B	40-60cm	1Cr	1Cr
2277 No.	<i>Corylus avellana</i>	Hazel	1+1: Transplant - seed raised: Branched: 2 brks: B	40-60cm	1Cr	1Cr
3579 No.	<i>Craeaegus monogyna</i>	Hawthorn	1+1: Transplant - seed raised: B	40-60cm	1Cr	1Cr
1141 No.	<i>Ilex aquifolium</i>	Common Holly	Bushy: 2 brks: C	30-40cm	2L	1Cr
574 No.	<i>Malus sylvestris</i>	Common Crab Apple	7+1: Transplant - seed raised: B	60-80cm	1Cr	1Cr
1141 No.	<i>Prunus spinosa</i>	Blackthorn	1+1: Transplant - seed raised: Branched: 2 brks: B	60-80cm	1Cr	1Cr
574 No.	<i>Viburnum opulus</i>	Guelder Rose	1+1: Transplant - seed raised: Branched: 2 brks: B	40-60cm	1Cr	1Cr
Total: 11401 No.						

#### TRANSLOCATED WOODLAND MIX - To be carried out within planting season, between October and March at locations indicated on plan. All trees to be planting in tree pits (300mm x 300mm x 300mm). Total Area 9,750 m<sup>2</sup> NT: Area consists of 50% proposed planting + 50 translocated planting @ 1.5m Centres

No.	Species	Common Name	Specification	Height	Pot Size	Density (m centres)
59 No.	<i>Acer campestre</i>	Field Maple	1+1: Transplant - seed raised: B	60-80cm	3Cr	3Cr
103 No.	<i>Betula pendula</i>	Common Silver Birch	1+1: Transplant - seed raised: Branched: 2 brks: B	40-60cm	3Cr	3Cr
183 No.	<i>Corylus avellana</i>	Common Hazel	1+1: Transplant - seed raised: Branched: 2 brks: B	40-60cm	3Cr	3Cr
358 No.	<i>Malus sylvestris</i>	Common Crab Apple	1+1: Transplant - seed raised: B	60-80cm	3Cr	3Cr
103 No.	<i>Prunus avium</i>	Wild Cherry	Standard: 4 brks: 2x: B: Clear Stem 175-200cm, Girth 10-12cm	300-350cm	3Cr	3Cr
328 No.	<i>Quercus robur</i>	Common Oak	1+1: Transplant - seed raised: B	40-60cm	3Cr	3Cr
271 No.	<i>Tilia cordata</i>	Small-leaved Lime	1+1: Transplant - seed raised: B	60-80cm	3Cr	3Cr
Total: 1088 No.						

#### TRANSLOCATED WOODLAND EDGE MIX - To be carried out within planting season, between October and March at locations indicated on plan. All trees to be planting in tree pits (300mm x 300mm x 300mm). Total Area 3,075 m<sup>2</sup> NT: Area consists of 50% proposed planting + 50 translocated planting @ 1m Centres

No.	Species	Common Name	Specification	Height	Pot Size	Density (m centres)
77 No.	<i>Acer campestre</i>	Field Maple	1+1: Transplant - seed raised: B	60-80cm	2Cr	2Cr
39 No.	<i>Cornus sanguinea</i>	Dogwood	1+1: Transplant - seed raised: Branched: 2 brks: B	40-60cm	2Cr	2Cr
154 No.	<i>Corylus avellana</i>	Hazel	1+1: Transplant - seed raised: Branched: 2 brks: B	40-60cm	2Cr	2Cr
270 No.	<i>Craeaegus monogyna</i>	Hawthorn	1+1: Transplant - seed raised: B	40-60cm	2Cr	2Cr
77 No.	<i>Ilex aquifolium</i>	Common Holly	Bushy: 2 brks: C	30-40cm	2L	2Cr
39 No.	<i>Malus sylvestris</i>	Common Crab Apple	1+1: Transplant - seed raised: B	60-80cm	2Cr	2Cr
77 No.	<i>Prunus spinosa</i>	Blackthorn	1+1: Transplant - seed raised: Branched: 2 brks: B	60-80cm	2Cr	2Cr
39 No.	<i>Viburnum opulus</i>	Guelder Rose	1+1: Transplant - seed raised: Branched: 2 brks: B	40-60cm	2Cr	2Cr
Total: 772 No.						

#### NATIVE HEDGEROW MIX - To be carried out within planting season, between October and March. Planting trench to be cultivated to a depth of 450mm. Soil ameliorant to be added where appropriate. Planting area to be weeded with herbicide application. Total Length - 770m

No.	Species	Common Name	Specification	Height	Pot Size	Density
260 No.	<i>Acer campestre</i>	Field Maple	1+1: Transplant - seed raised: B	60-80cm	0.3Cr Double Staggered at 0.3m offset	2Cr
771 No.	<i>Corylus avellana</i>	Hazel	1+1: Transplant - seed raised: Branched: 2 brks: B	40-60cm	0.3Cr Double Staggered at 0.3m offset	2Cr
3637 No.	<i>Craeaegus monogyna</i>	Hawthorn	1+1: Transplant - seed raised: B	40-60cm	0.3Cr Double Staggered at 0.3m offset	2Cr
260 No.	<i>Ilex aquifolium</i>	Holly	Bushy: 2 brks: C	30-40cm	0.3Cr Double Staggered at 0.3m offset	2Cr
Total: 5128 No.						

#### UPPER MARGINAL MIX - Total Area 1,090 m<sup>2</sup>

No.	Species	Common Name	Specification	Height	Pot Size	Density
437 No.	<i>Hydrocotyle vulgaris</i>	Yellow Flag Iris	Full Pot: Sept to April planting: British Native-origin: C	0.5L	4m <sup>2</sup>	4m <sup>2</sup>
1388 No.	<i>Iris pseudacorus</i>	Purple Loosestrife	Full Pot: Sept to April planting: British Native-origin: C	0.5L	4m <sup>2</sup>	4m <sup>2</sup>
437 No.	<i>Lythrum salicaria</i>	Water Forget-me-not	Full Pot: Sept to April planting: British Native-origin: C	0.5L	4m <sup>2</sup>	4m <sup>2</sup>
437 No.	<i>Menyanthes arvensis</i>	Common Flew	Full Pot: Sept to April planting: British Native-origin: C	0.5L	4m <sup>2</sup>	4m <sup>2</sup>
873 No.	<i>Myosotis scorpioides</i>	Scab-wormwood	Full Pot: Sept to April planting: British Native-origin: C	0.5L	4m <sup>2</sup>	4m <sup>2</sup>
437 No.	<i>Phagnolius australis</i>	Common Rues	Full Pot: Sept to April planting: British Native-origin: C	0.5L	4m <sup>2</sup>	4m <sup>2</sup>
437 No.	<i>Ranunculus sceleratus</i>	Celery-leaved Buttercup	Full Pot: Sept to April planting: British Native-origin: C	0.5L	4m <sup>2</sup>	4m <sup>2</sup>
Total: 4367 No.						

#### CAR PARK PLANTING - Total Area of Vinca= 368m<sup>2</sup>; Ilex= 68m<sup>2</sup>

No.	Species	Common Name	Specification	Height	Pot Size	Density
183 No.	<i>Ilex aquifolium</i>	Common Holly	Leader with Laterals: C	40-60cm	1L	4m <sup>2</sup>
1136 No.	<i>Vinca minor</i>	Lesser Periwinkle	Several Shoots: C	40-60cm	1L	4m <sup>2</sup>

#### ADDITIONAL TREE PLANTING - To be carried out within planting season, between October and March at locations indicated on plan. All trees to be planted in tree pits as detailed in DWG.

No.	Species	Common Name	Specification	Height	Girth	Density
6 No.	<i>Acer campestre</i>	Field Maple	10-12cm Standard: 4 brks: 2x: RB: Clear Stem 175-200cm	60-80cm	10-12cm	Counted
6 No.	<i>Prunus avium</i>	Wild Cherry	Selected Standard: 4 brks: 2x: RB: Clear Stem 175-200cm	300-350cm	10-12cm	Counted

#### EXISTING WOODLAND - To be underplanted with 50 Hollies where required in gaps (*Ilex aquifolium*, spec as per proposed native woodland edge mix.)

#### TRANSPLANTED HEDGEROW - To be reinforced with 50 Hollies where required in gaps (*Ilex aquifolium*, spec as per proposed native hedgerow mix.)

#### AMENITY GRASS MIX - To be carried out within growing season, March to May or August to October. Germinal GB A22 Low Maintenance Seed Mix for Road and Path Verges (Seed application rate: 50g/ m<sup>2</sup>) ([www.germinalamenity.com/product/a22-low-maintenance](http://www.germinalamenity.com/product/a22-low-maintenance)) or similar. Seeded area to be cultivated to a depth of 250mm. Total Area - 3,930 m<sup>2</sup> within Red line boundary plus 10,000 m<sup>2</sup> to verges of access road to A120 (see HDA SA1).

#### PROPOSED GRASSCRETE QUARANTINE BAY - To be carried out within planting season, March to May or August to October. Germinal GB A22 Low Maintenance Seed Mix for Road and Path Verges (Seed application rate: 50g/ m<sup>2</sup>) ([www.germinalamenity.com/product/a22-low-maintenance](http://www.germinalamenity.com/product/a22-low-maintenance)) or similar. Seeded area to be cultivated to a depth of 250mm. Total Area - 135 m<sup>2</sup>.

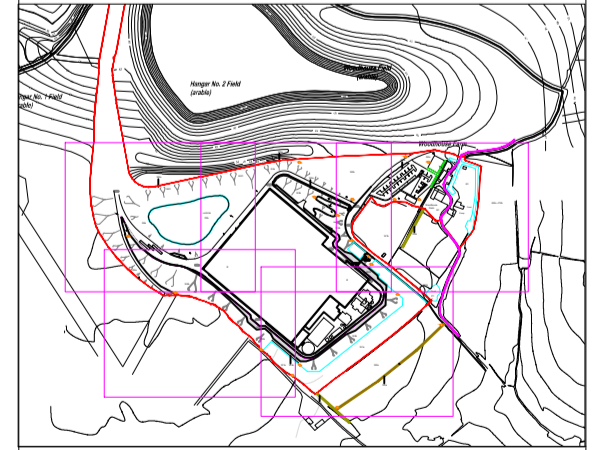
#### PROPOSED SPECIES-RICH NEUTRAL GRASSLAND PRIORITY HABITAT - To be carried out within planting season, March to May or August to October. Emorsgate Seed EM1 - Basic general purpose meadow; (Seed application rate: 4g/ m<sup>2</sup>) ([www.wildseed.co.uk/mixtures/view/2/basic-general-purpose-meadow-mixture](http://www.wildseed.co.uk/mixtures/view/2/basic-general-purpose-meadow-mixture)) or similar. Seeded area to be cultivated to a depth of 250mm. Total Area - 28,010 m<sup>2</sup> within Red line boundary plus 34,320m<sup>2</sup> to verges of access road to A120 (see HDA SA1).

#### PROPOSED OPEN MOSAIC GRASSLAND PRIORITY HABITAT - To be carried out within planting season, March to May or August to October. Emorsgate Seed EM1 - Basic general purpose meadow; (Seed application rate: 4g/ m<sup>2</sup>) ([www.wildseed.co.uk/mixtures/view/2/basic-general-purpose-meadow-mixture](http://www.wildseed.co.uk/mixtures/view/2/basic-general-purpose-meadow-mixture)) or similar. Seeded area to be prepared with gravel and subsoil to a depth of 250mm. Total Area - 4,325 m<sup>2</sup>.

- ### KEY
- Site Boundary
  - Existing Vegetation (W1a)
  - Proposed Barrier Fencing
  - Proposed Soil Nailing (SNW)
  - Proposed Woodland Mix (W2b)
  - Proposed Woodland Edge Mix (W2b)
  - Proposed Rabbit Proof Fencing & Access Stile
  - Proposed Hedgerow (W3a)
  - Proposed Amenity Grassland (G2a)
  - Proposed Species-Rich Neutral Grassland Priority Habitat (G2a)
  - Proposed Sedum Roof Habitat (R)
  - Proposed Vehicle Deterrent Paving
  - Extent of A1 Planting Plan Sheets

Note: The area of the Green Roof is 4.7ha and the elevational area of the Soil Nail Walling is 0.43ha.

Note:  
Rev A Dec 14 Add quarantine bay, extent of brown roof, etc.  
Rev B Jan 15 Add Carpark planting  
Rev C April 15 Revised layout  
Rev D June 22 Revised layout  
Rev E July 17 Add Soil Nailing  
Rev F July 23 Revised Soil Nailing  
Rev G Dec 18th Add note



CLIENT: Gent Fairhead & Co Ltd  
PROJECT: IWMF, Rivenhall  
TITLE: Soft Landscape Proposals Sheet 1 of 5  
SCALE AT A1: 1:500 @ A1  
DATE: July 2015  
732:1/02G HDA SL1

0 10 20 30 40 50 m  
SCALE 1 : 500

Based on Ordnance Survey mapping with permission of the Mapping Authority Office Licence No. 1038028  
© hdm3acron duncall associates  
The Studio, Highway Park, Barton Lane, Worthington, CV10 8BA  
t: 01201 881791 e: info@hdm3acron.co.uk w: www.hdm3acron.co.uk

hda  
Landscaping  
Masterplanning  
Ecology